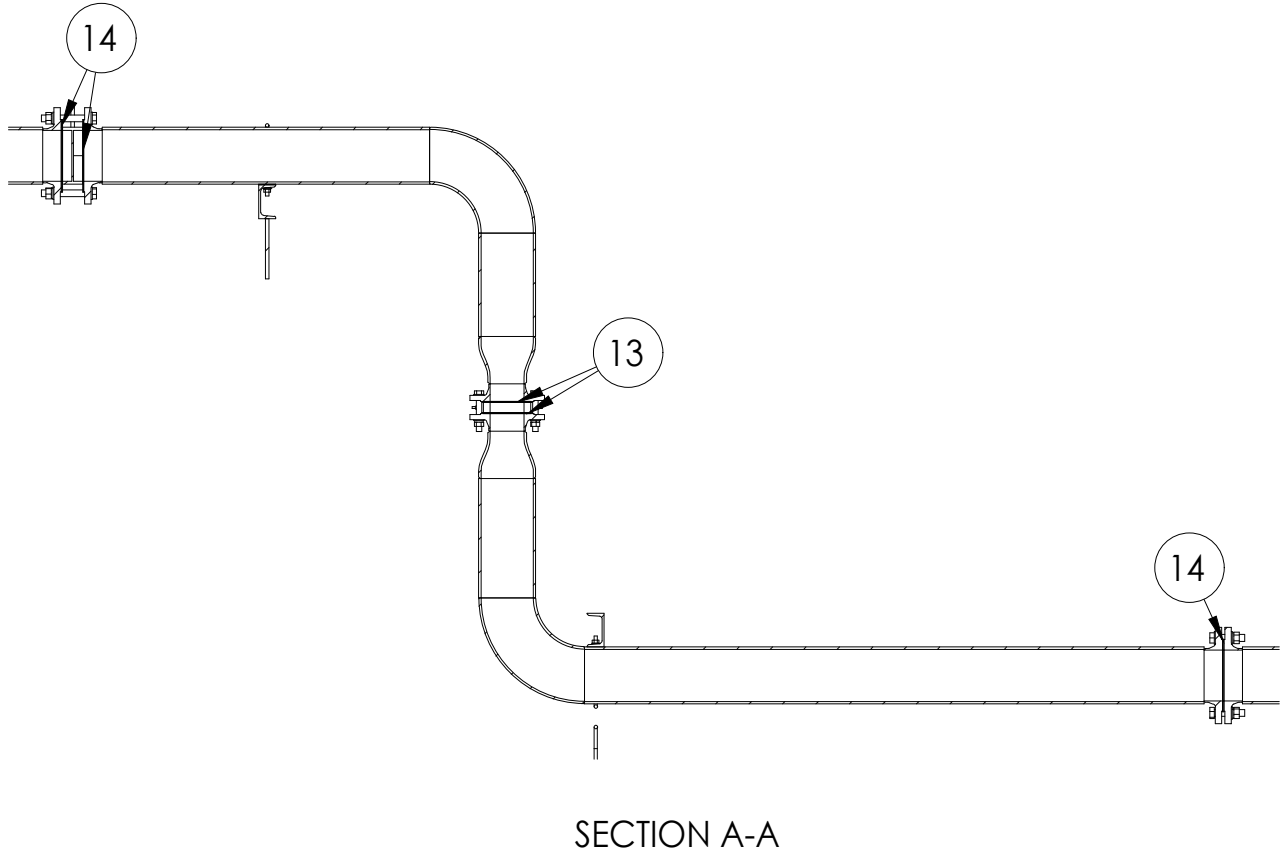

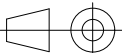
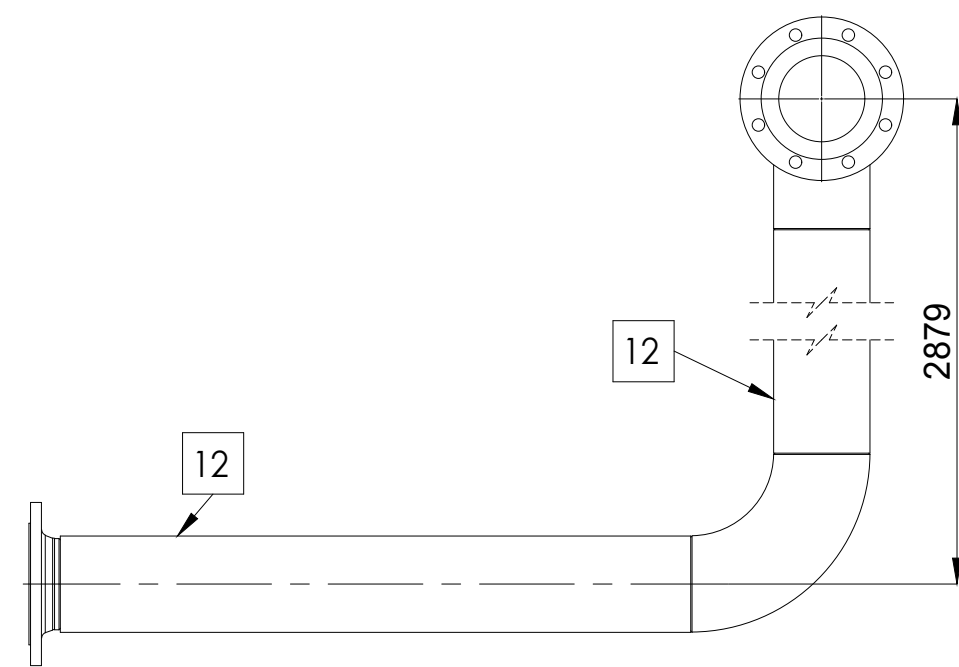


24	NUT DIN 934 M20-A4	A	NUT M20	A4		0.06	120	7.2	
23	DIN127-M20-A4	A	WASHER M20	A4		0.02	120	2.4	
22	DIN125-M20-A4	A	WASHER M20	A4		0.02	233	4.66	
21	DIN933-M20X150-A4-80	A	BOLT M20X150	A4		0.46	8	3.68	
20	DIN933-M20X130-A4-80	A	BOLT M20X130	A4		0.41	32	13.12	
19	DIN933-M20X90-A4-80	A	BOLT M20X90	A4		0.31	80	24.8	
18	DIN934-M16-A4-80	A	NUT M16	A4		0.03	8	0.24	
17	DIN127-M16-A4	A	WASHER M16	A4		0.01	8	0.08	
16	DIN125-M16-A4	A	WASHER M16	A4		0.01	16	0.16	
15	DIN933-M16X110-A4-80	A	BOLT M16X110	A4		0.22	8	1.76	
14	DIN 2690		GASKET - KLINGERSIL C-4430 - 3 THK. - DN150	FIBERGLASS WINBR		-	16	0	
13	DIN 2690		GASKET - KLINGERSIL C-4430 - 3 THK. - DN100	FIBERGLASS WINBR		-	2	0	
12	EN 10217-7 -SS316L		TUBE 6" - 4.5 THK - WELDED PIPE	AISI 316L		0	13348mm	0	
11	EN 10217-7 -SS316L		TUBE 2" - 2.9 THK - WELDED PIPE	AISI 316L		0	389mm	0	
10	2258-3321-TMT-ESR11-GEN05	A	SUPPORT 5	S275JR		24.34	1	24.34	
9	2258-3321-TMT-ESR11-GEN04	A	SUPPORT 4	S275JR		20.59	2	41.18	
8	2258-3321-TMT-ESR11-GEN03	A	SUPPORT 3	S275JR		24.55	1	24.55	
7	2258-3321-TMT-ESR11-GEN02	A	SUPPORT 2	S275JR		18.62	1	18.62	
6	2258-3321-TMT-ESR11-GEN01	A	SUPPORT 1	S275JR		32.47	2	64.94	
5	PID 530		EXECUTION WITH LOOSE FLANGES; OPERATING TEMP.: - 20°C TO +250°C, TOTAL LENGTH: 200 MM, EXTENSIBILITY: AX: 22MM / LAT: 4,1MM, PN10	COMMERCIAL		34.50	2	69	
4	PID 490		BUTTERFLY VALVE FOR INSTALLATION BETWEEN 2 FLANGES DN150, INCL. STEP SEAT SEALING FOR AIR, WITH PNEUMATIC ACTUATOR, SINGLE-ACTING, OPEN/CLOSE IN 1 SECOND, 5 BAR COMPRESSED AIR WITH 3/2-WAY SOLENOID VALVE 24VDC, LEAKAGE APPROX. 0.02% OF KV 90°, PN 10, INCL. POSITION SWITCH 24VDC, OPEN/CLOSE, 2-WIRE	COMMERCIAL		14.79	2	29.58	
3	PID 460		BUTTERFLY VALVE FOR INSTALLATION BETWEEN 2 FLANGES DN 150 PN 10 FOR AIR, WITH HANDLE	COMMERCIAL		7.63	2	15.26	
2	PID 450	-	CONTROL BUTTERFLY VALVE FOR INSTALLATION BETWEEN 2 FLANGES DN 100 PN 10 FOR AIR, JASTA GD6, COMPLETE ASSEMBLED WITH PNEUMATIC ACTUATOR, OPEN/CLOSE IN 3 - 5 SECONDS MAX., AND SIEMENS SIPART PS 2, TYPE: 6DR5010-0NG01-0AA0-Z C20, 4-20 MA IN- AND OUTPUT, 24VDC.	COMMERCIAL		29.53	1	29.53	
1	PID 420	-	MEASURING ORIFICE FOR AIR, INSTALLATION BETWEEN FLANGES DN150, V= 844 NM3/H, PE= 90 MBAR, DIFFERENTIAL PRESSURE: 15 MBAR	COMMERCIAL		2.83	1	2.83	
Nº	PART NUMBER / ARTICLE CODE	REV.	DESCRIPTION	MATERIAL	MANUFACTURER	TAG	WEIGHT (KG)	QTY.	TOTAL WEIGHT (KG)

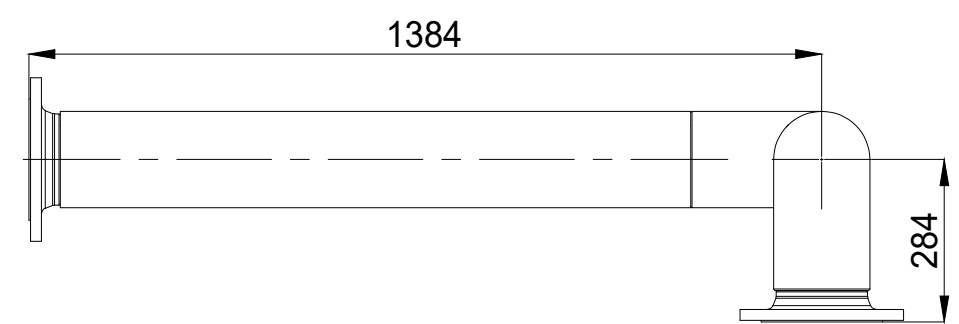


Rev.		Modification										Name		Date					
This drawing is property of INSERTEC. Must not be copier or transferred to third parties in any way without written authorization.																			
Tolerance for dimensions without tol. according to ISO 2768-mK																			
More than		0.5	3	6	30	120	400	1000	2000	Draw		Name		Date		Material			
Less		3	6	30	120	400	1000	2000	4000	Checked		J.J.R.R		01/12/2025		316L			
Machine Tool		± 0.1	± 0.1	± 0.2	± 0.3	± 0.5	± 0.8	± 1.2	± 2	Verified		O.A.P.M.		01/12/2025		Weight (kg)			
Welded			± 0.5	± 1	± 1.5	± 2	± 3	± 4	± 6	Verified		B.U.		02/12/2025		1050			
Customer:										Format:		Title  ALINVEST TMT (FVRB-2,7-25) FIRST STAGE AIR							
ALINVEST										A2									
										Scale:								1:20	
<div><div>insertec</div><div>Furnaces &amp; Refractories</div></div> <div></div>										Project Methode:		Part Number						Revision	
												2558-3321-TMT-M-ESR11						B	
												Customer Number						Sheet	
						-						1/2							

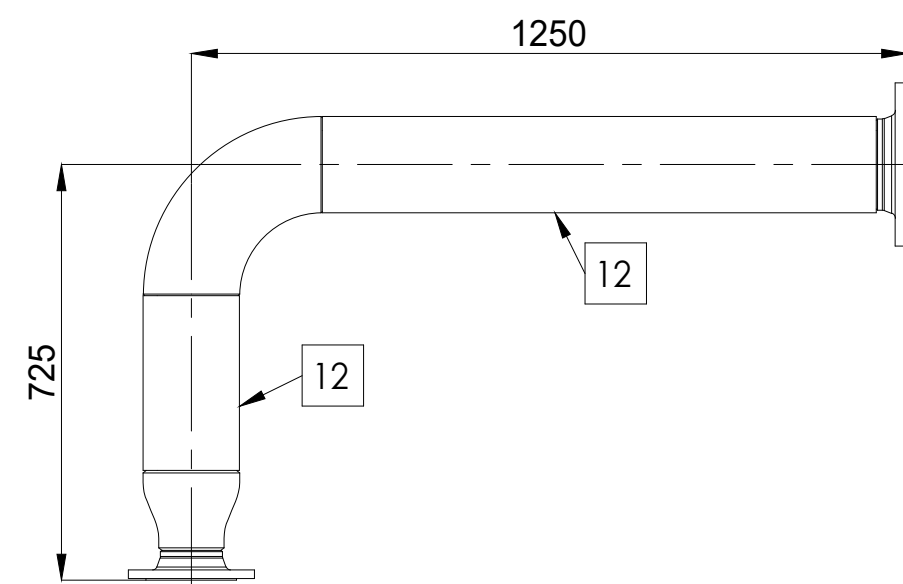
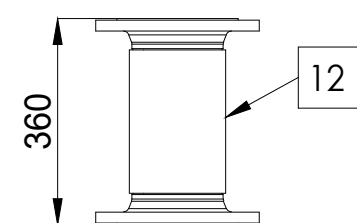




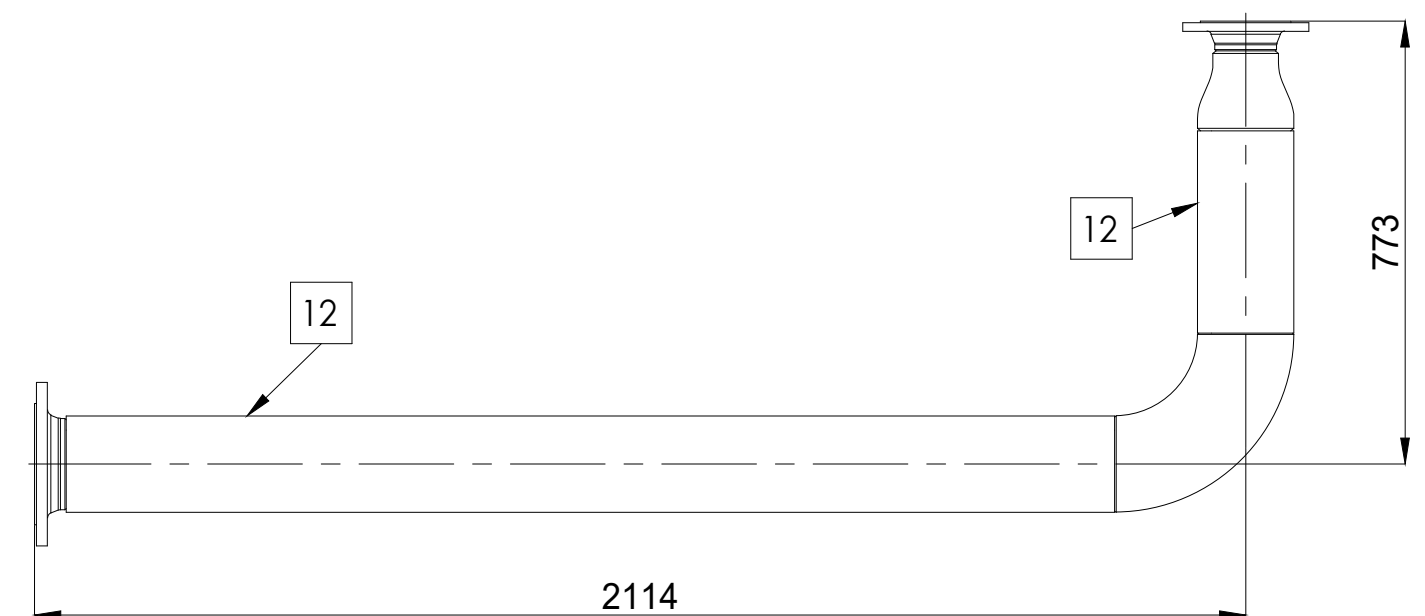
SPOOL #1 - QTY: 1



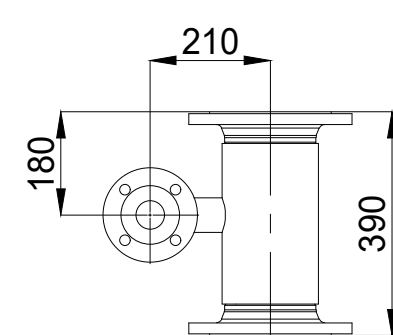
SPOOL #5 - QTY: 2



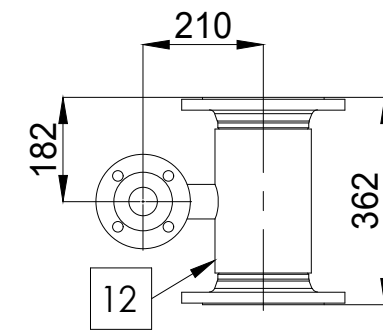
SPOOL #2 - QTY: 1



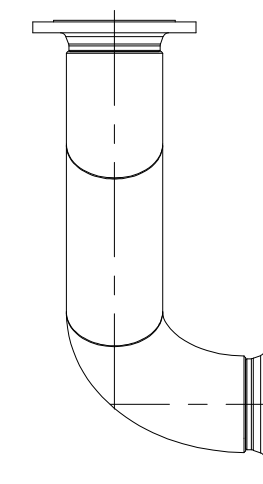
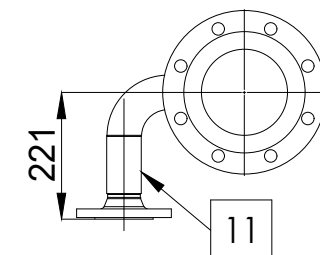
SPOOL #3- QTY: 1



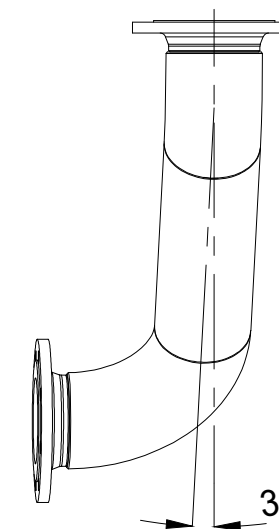
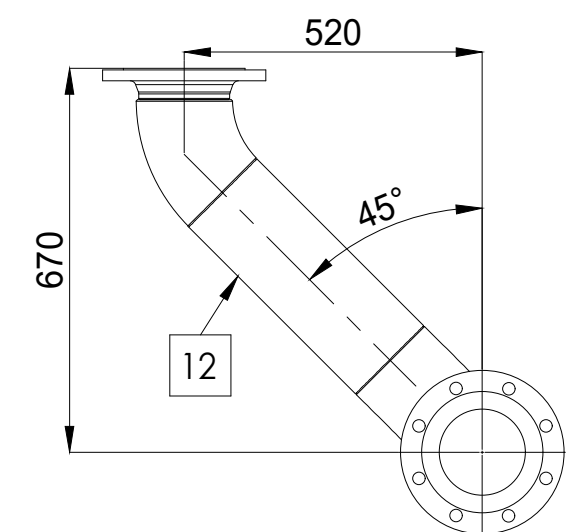
SPOOL #6 - QTY: 1



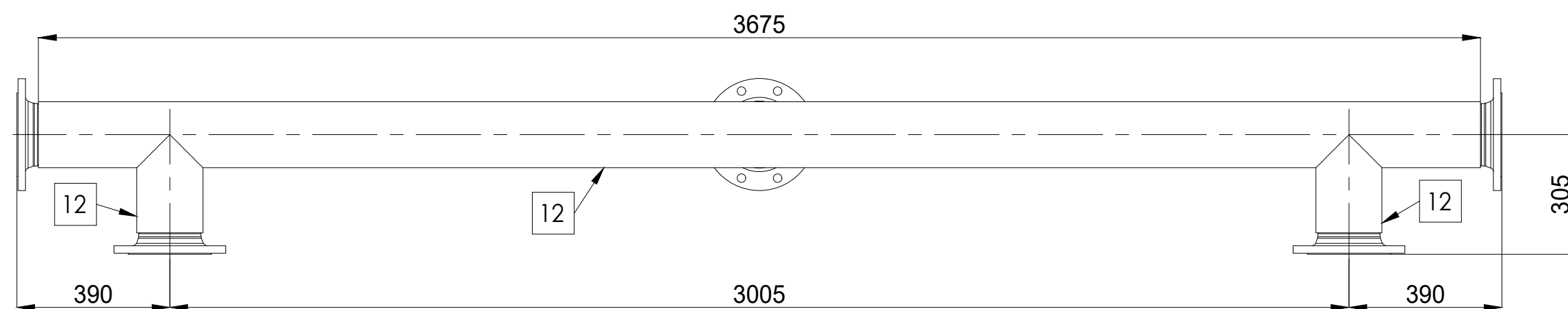
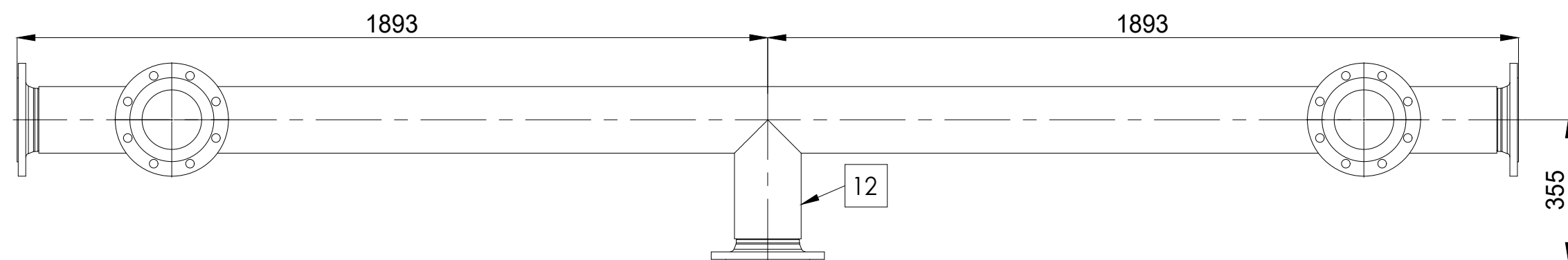
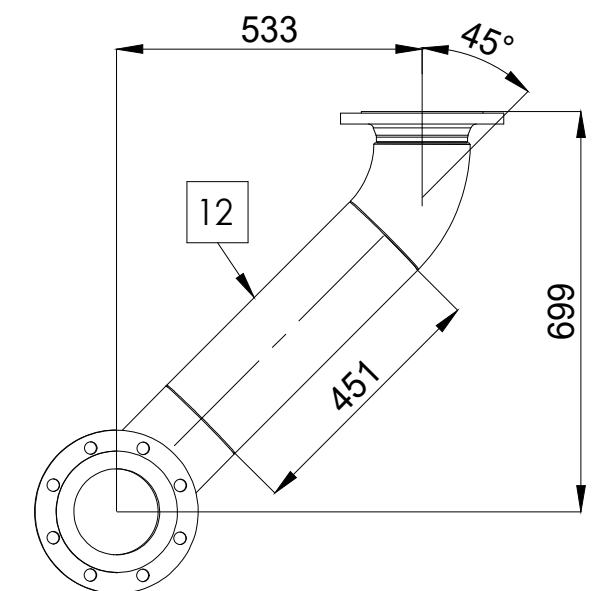
SPOOL #8 - QTY: 1





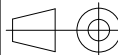
SPOOL #7 - QTY: 1



SPOOL #9 - QTY: 1



SPOOL #4 - QTY: 1

Rev.	Modification										Name		Date					
This drawing is property of INSERTEC. Must not be copied or transferred to third parties in any way without written authorization.																		
Tolerance for dimensions without tol. according to ISO 2768-mK											Name		Date		Material			
More than		0.5	3	6	30	120	400	1000	2000	Draw		J.J.R.R		01/12/2025		Weight (kg)	316L  1050	
Less		3	6	30	120	400	1000	2000	4000	Checked		O.A.P.M.		01/12/2025				
Machine Tool		± 0.1	± 0.1	± 0.2	± 0.3	± 0.5	± 0.8	± 1.2	± 2	Verified		B.U.		02/12/2025				
Welded				± 0.5	± 1	± 1.5	± 2	± 3	± 4	± 6								
Customer:									Format:		Title  ALINVEST TMT (FVRB-2,7-25) FIRST STAGE AIR							
ALINVEST									Scale:								1:20	
<div> </div>									Project		Part Number  2558-3321-TMT-M-ESR11						Revision	
									Methode:									
									Customer Number		-						Sheet 2/2	